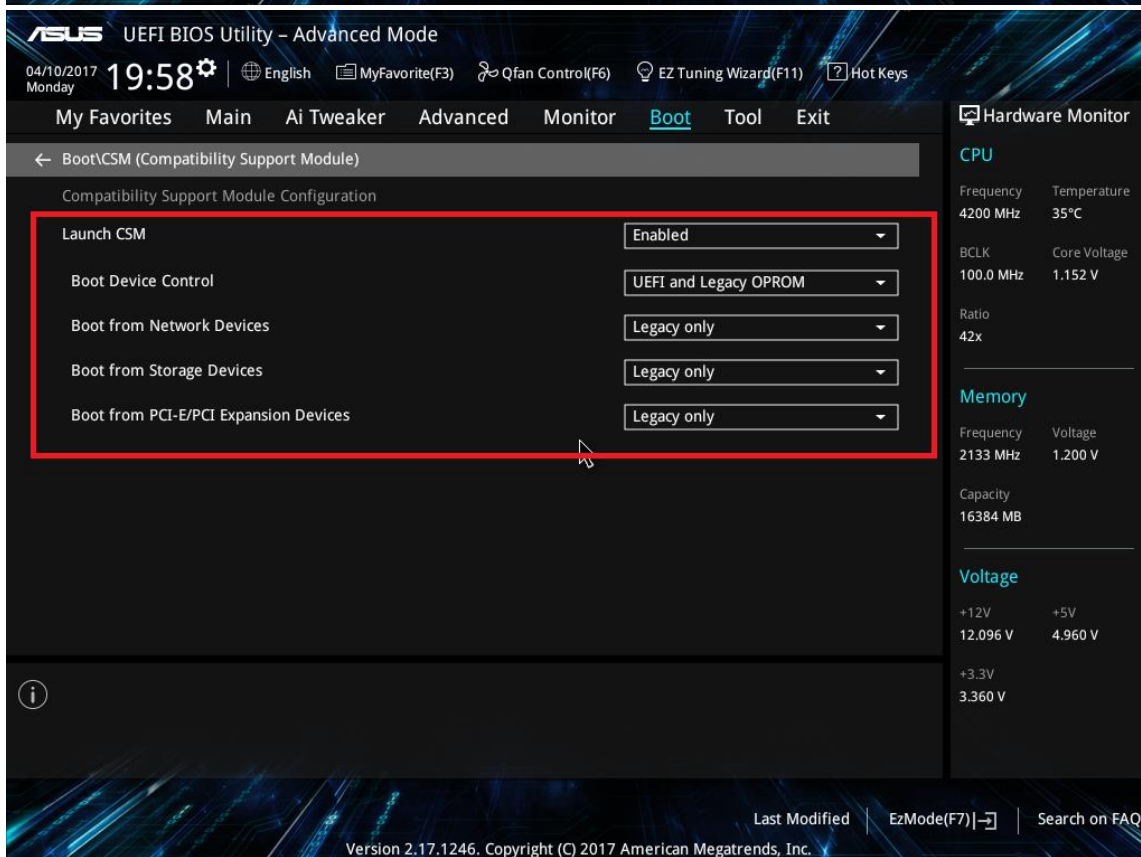
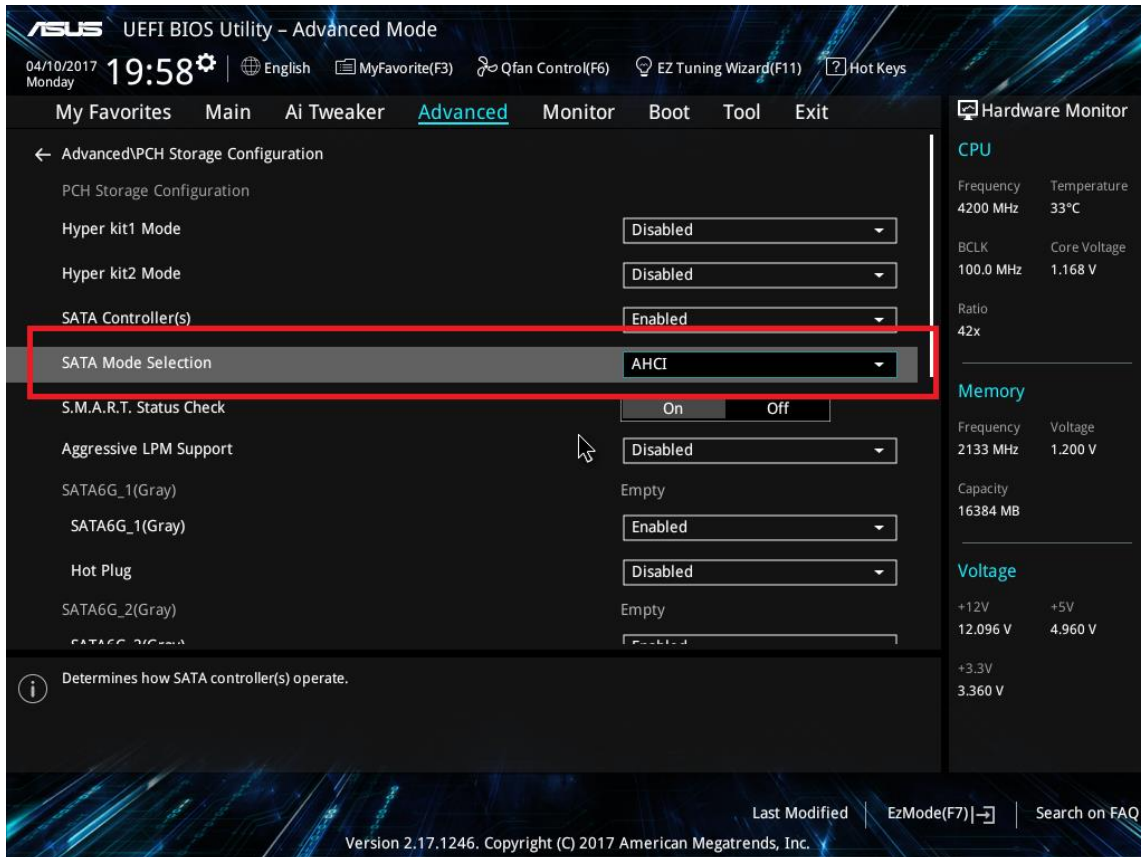


OptaneMemory SOP

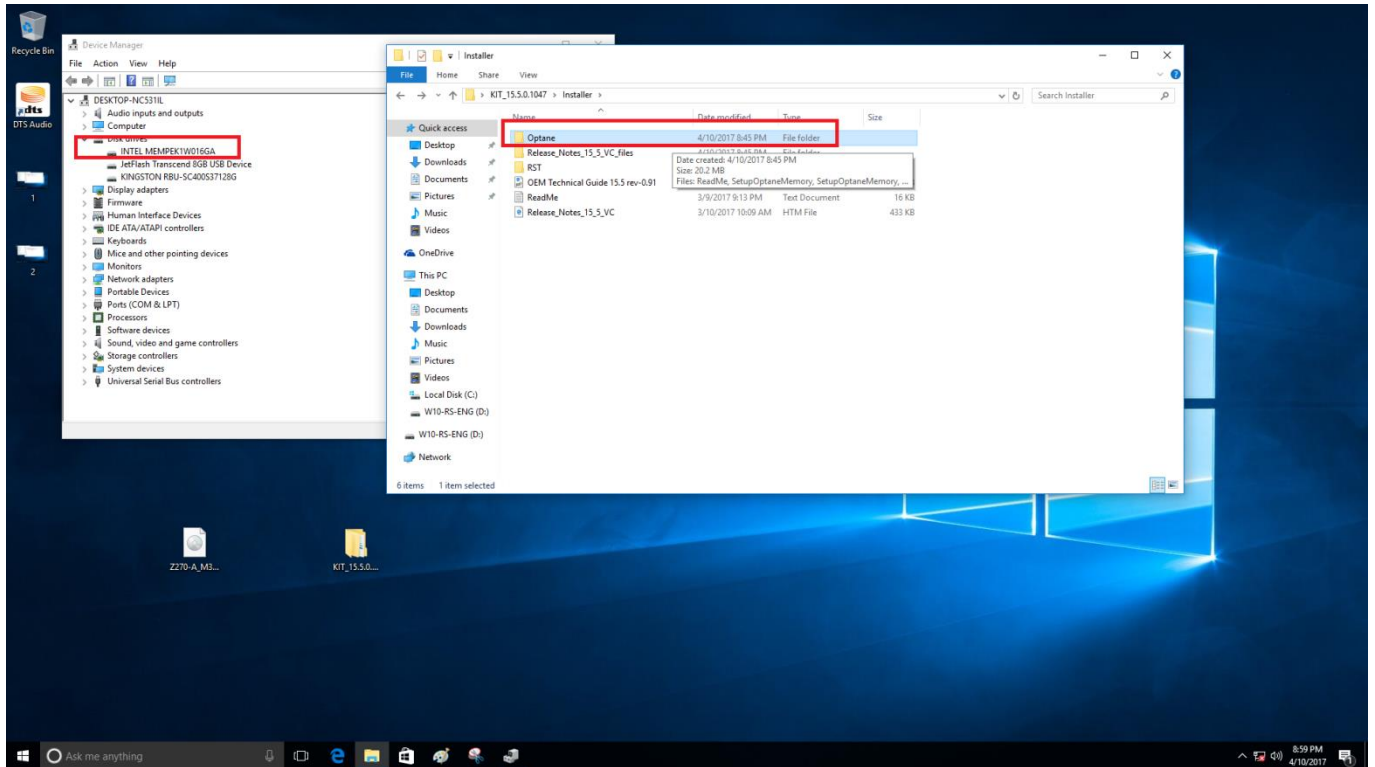
To use an OptaneMemory, we need to adjust the settings in the BIOS, and then install the driver on the operating system. Different methods are taken which differ according to the different OS modes (AHCI mode & RAID mode).

❌ Install OptaneMemory in AHCI mode OS (Installing OptaneMemory on AHCI mode OS)

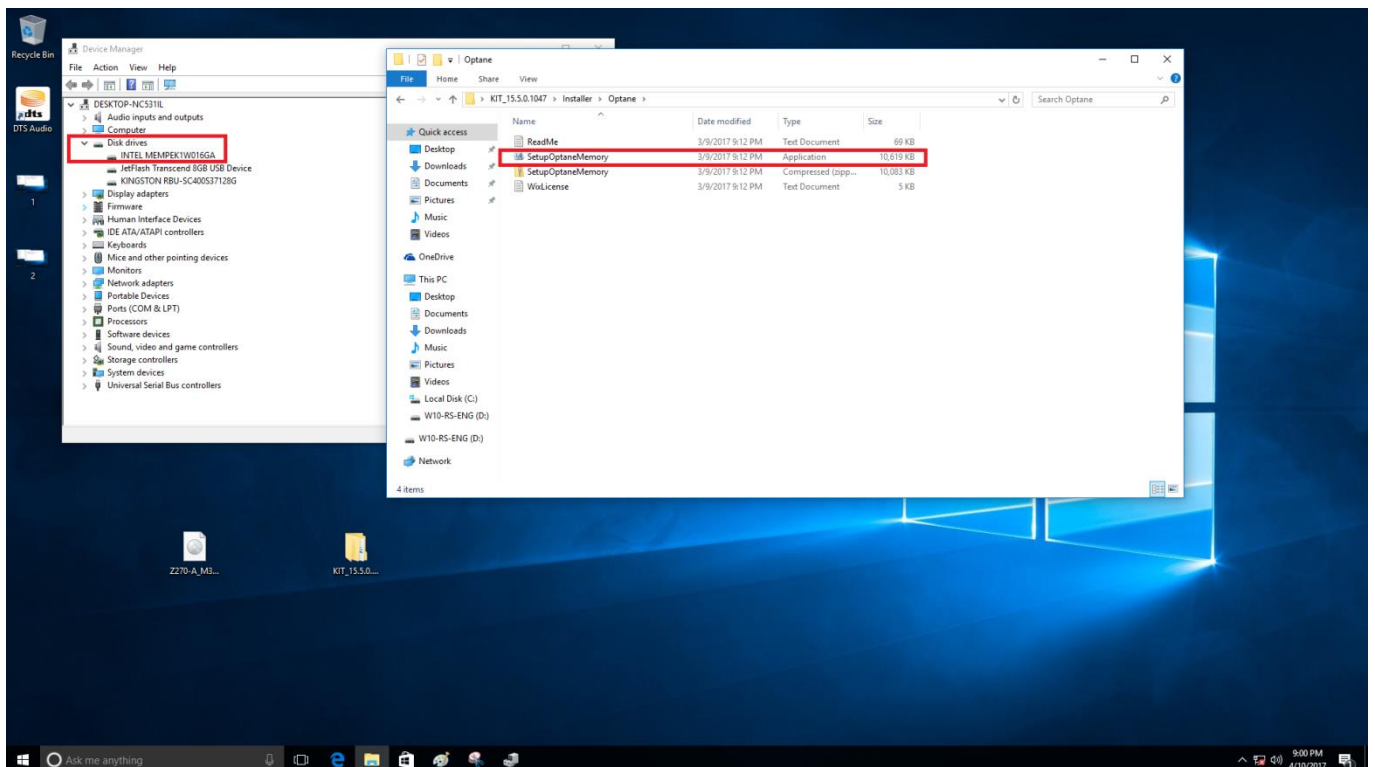
Under normal circumstances the BIOS settings are defaulted when AHCI mode OS is selected and do not need to be adjusted for the installation in Windows OS. Please double check whether the settings are identical to the following pictures.



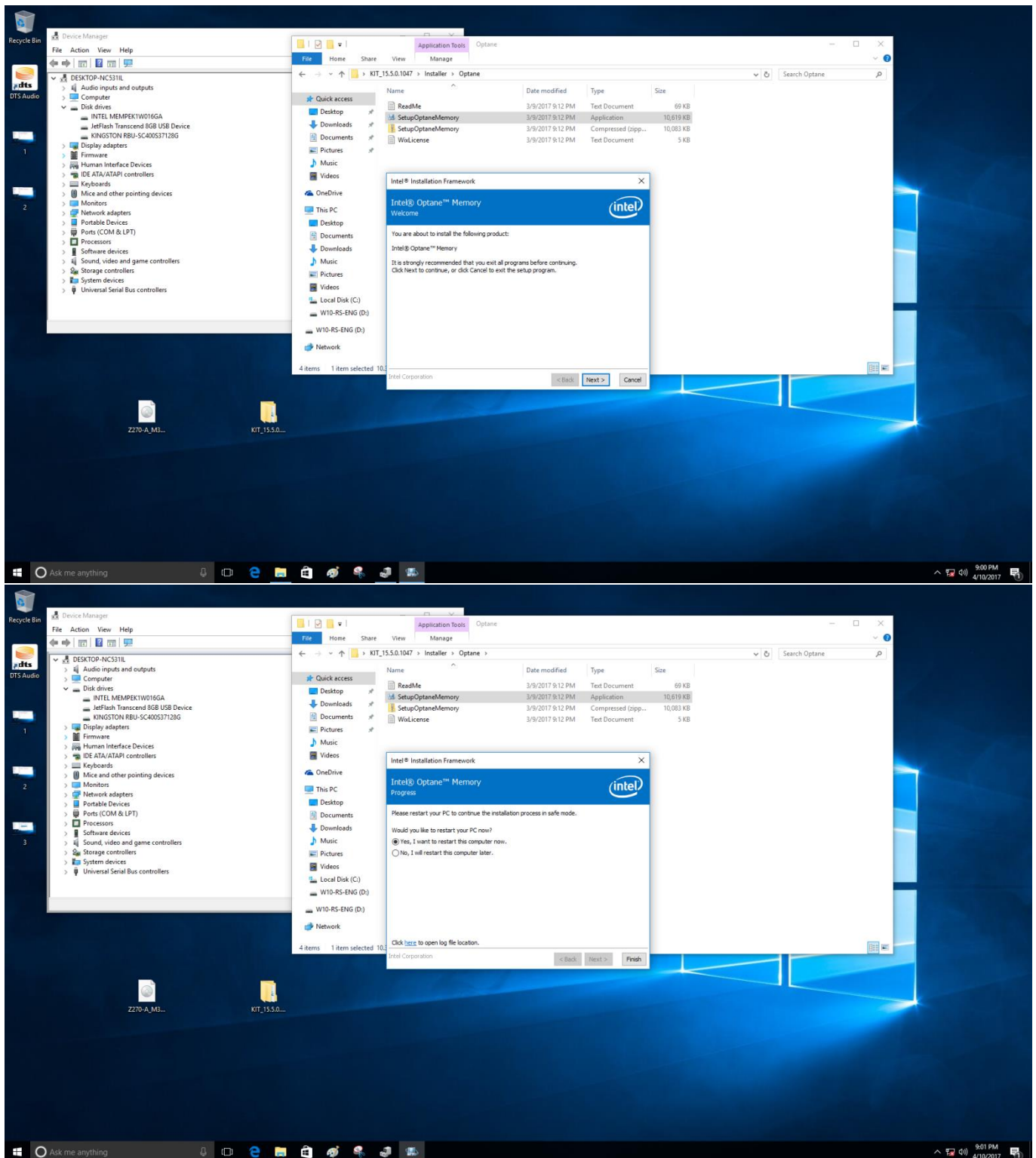
Connect an OptaneMemory device, then enter the OS and select the Optane Installer - ensure that the OptaneMemory device is recognized and appears in the device manager before installation. When using an AHCI OS mode, please select the folder named **Optane**, do not select the **RST** folder.



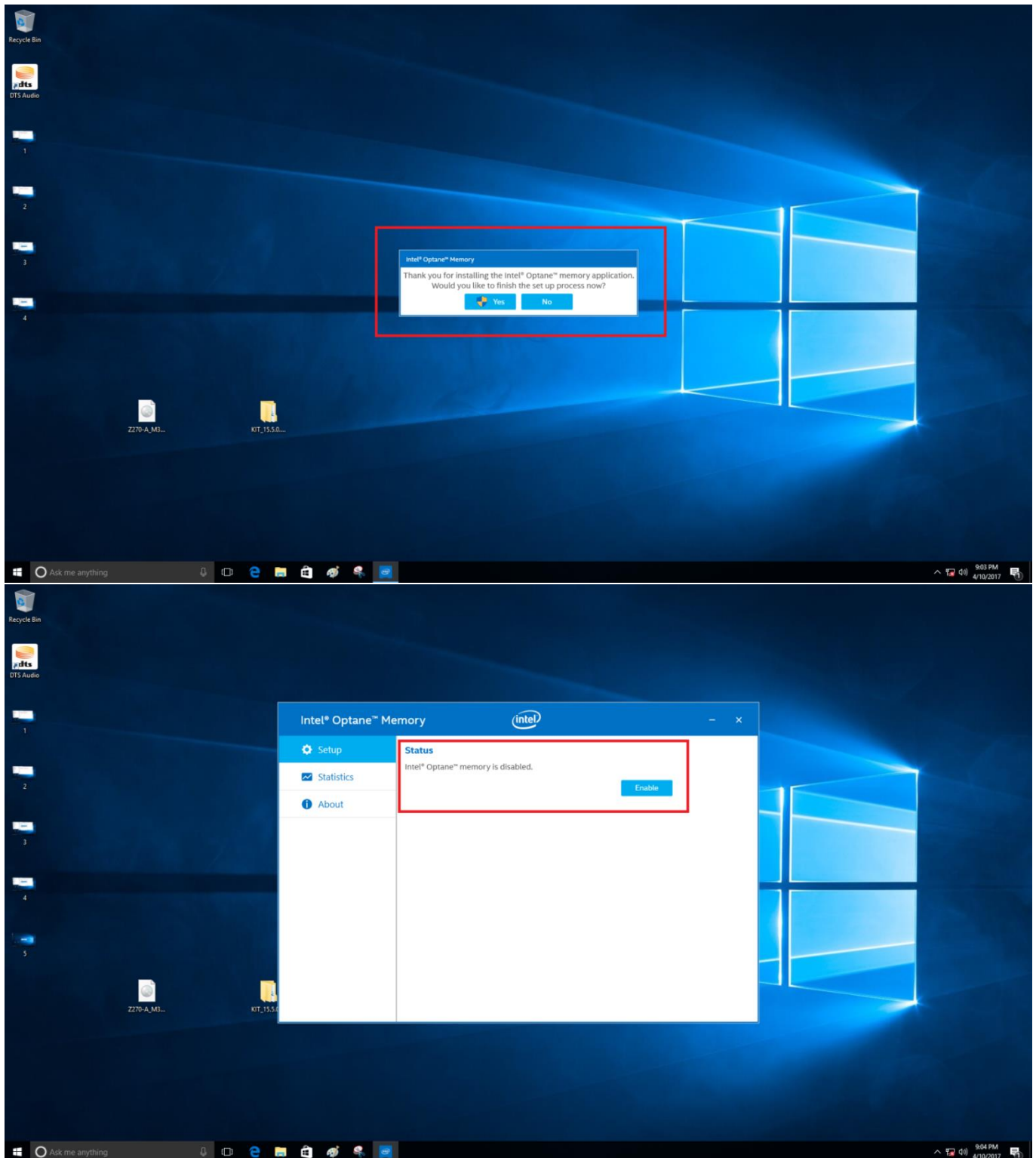
Select "SetupOptaneMemory".

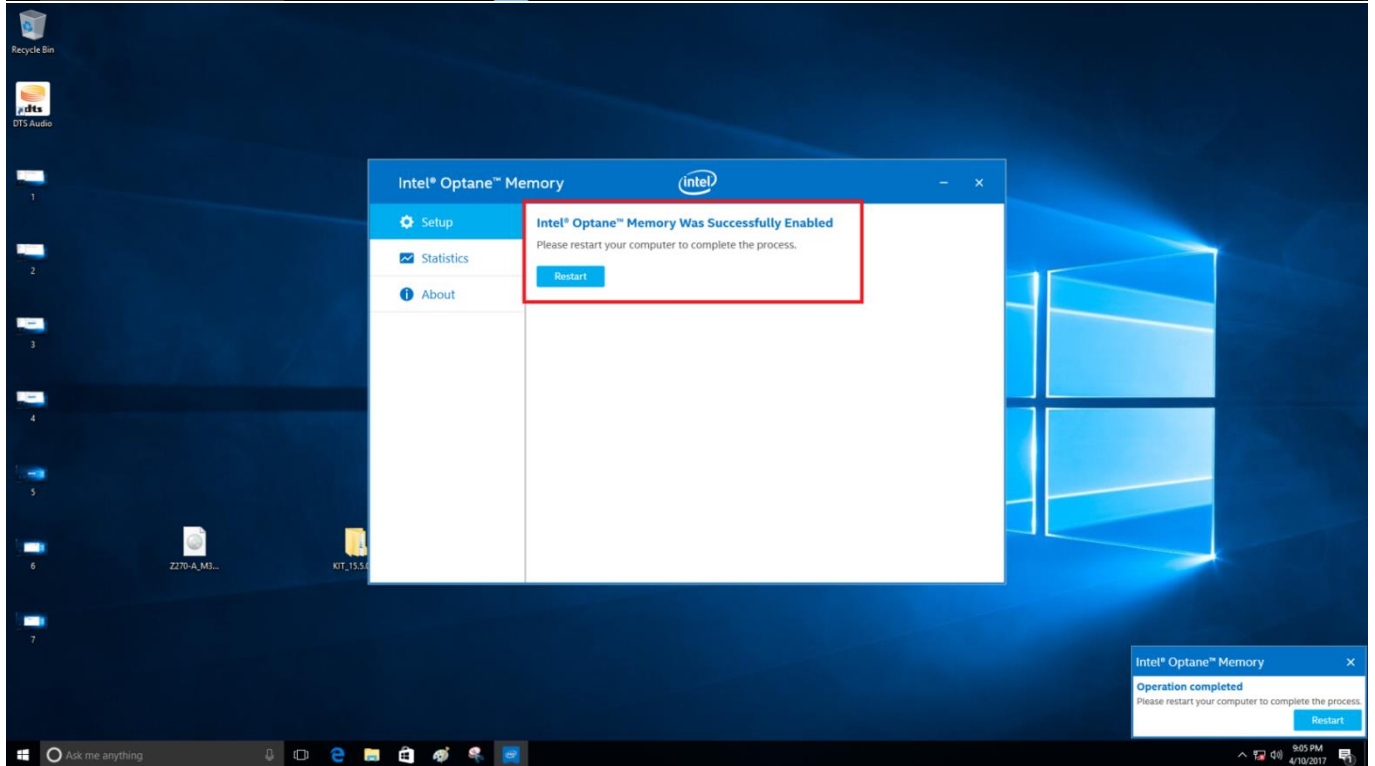
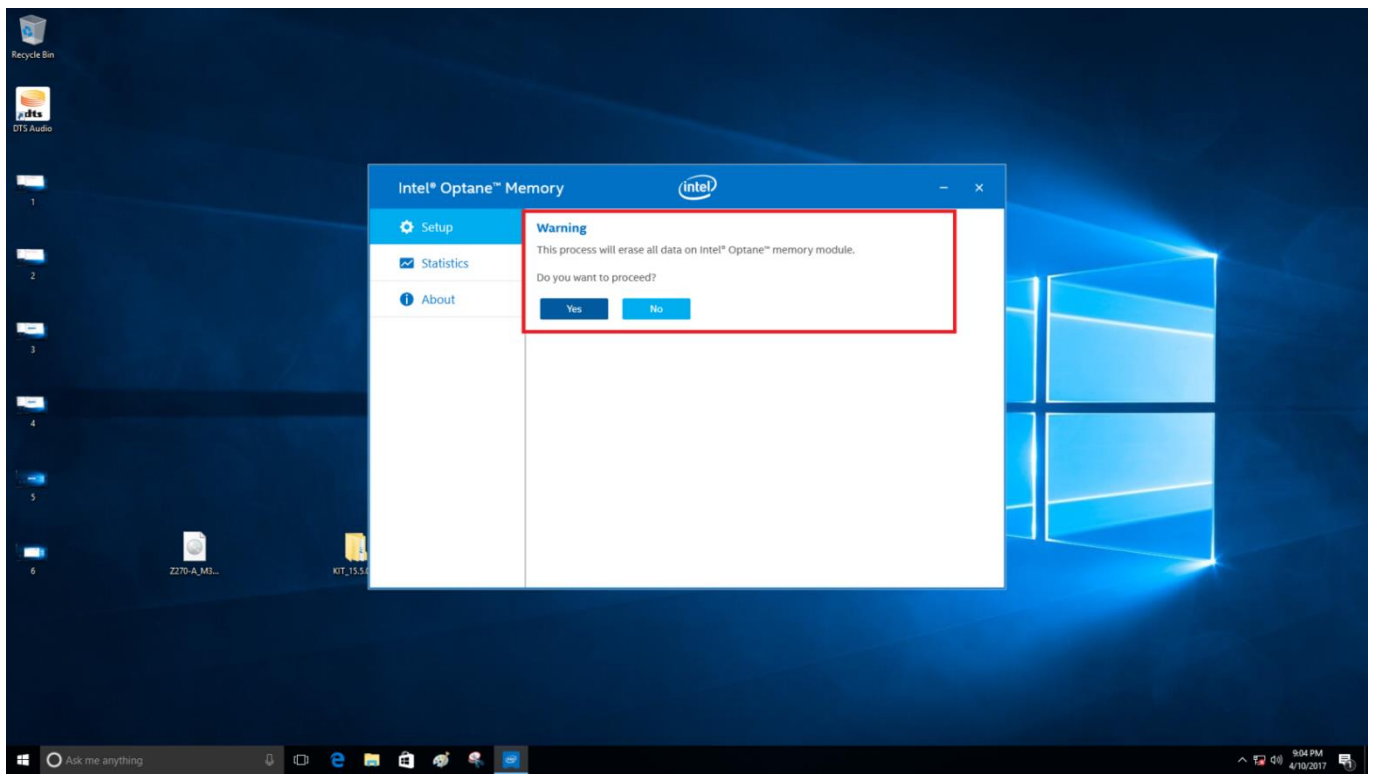


After launching the **SetupOptaneMemory** application, click **Next** and follow the steps shown on the installer. The installer will now prompt you to restart your computer, doing so will transfer **AHCI mode** to **RAID mode**, and **Remapping** options will be set to enabled. If the **CSM** setting is set to default, the **Boot from Storage Devices** option will be set to **UEFI driver first**.



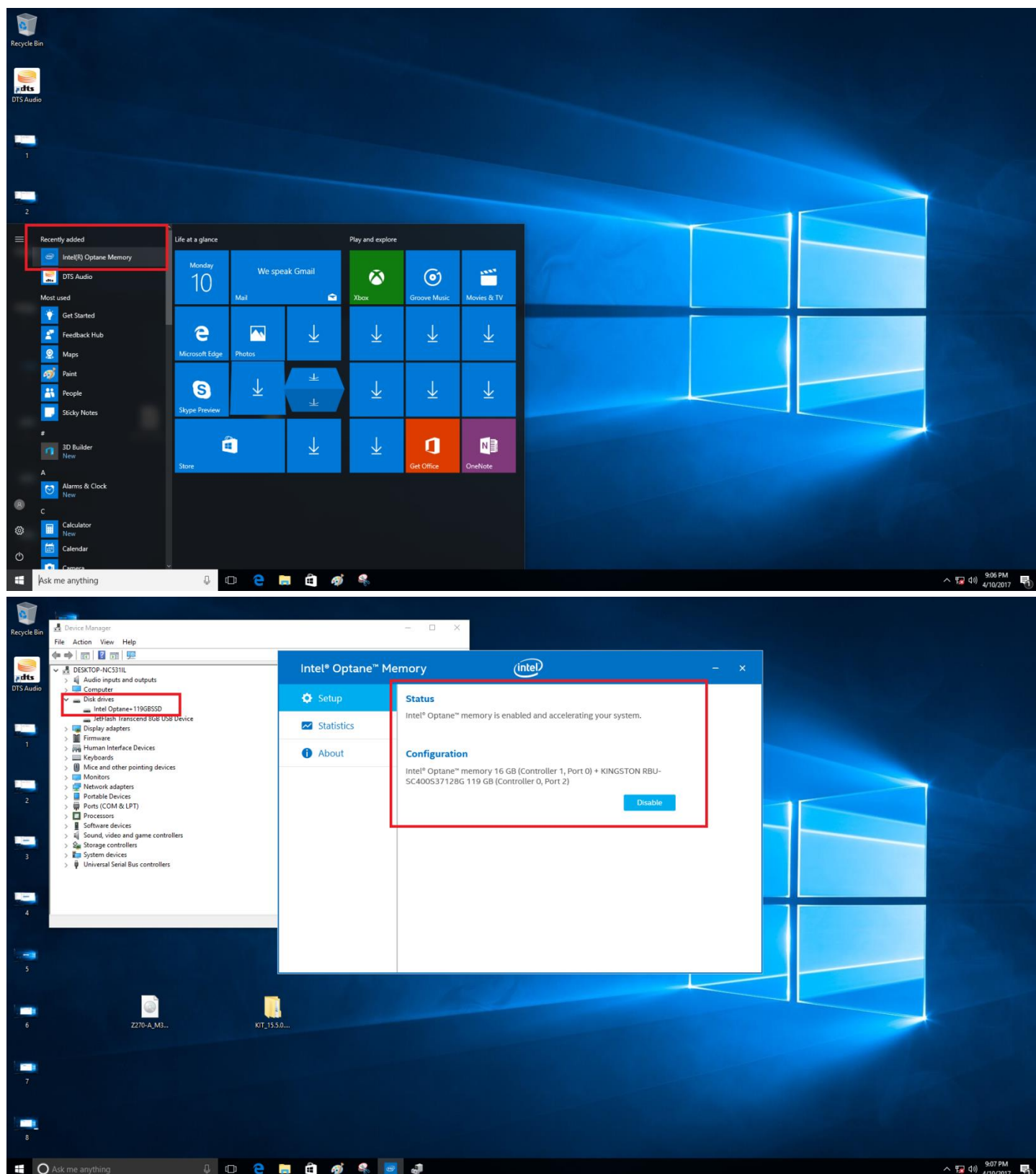
Enter the OS after the restart, an OptaneMemory popup will automatically be prompted, click **Yes**. Click **Enable** to launch OptaneMemory, then follow the steps shown until you are prompted to restart your computer again and click **Restart**.





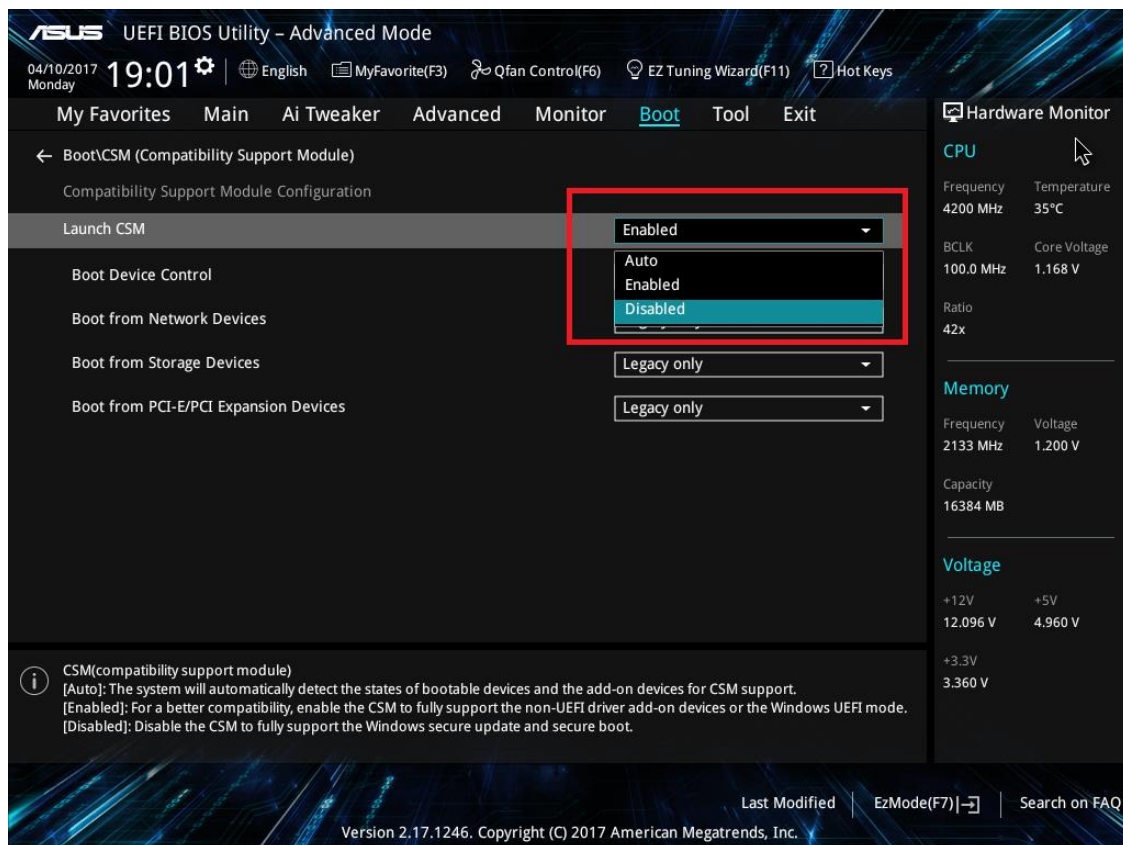
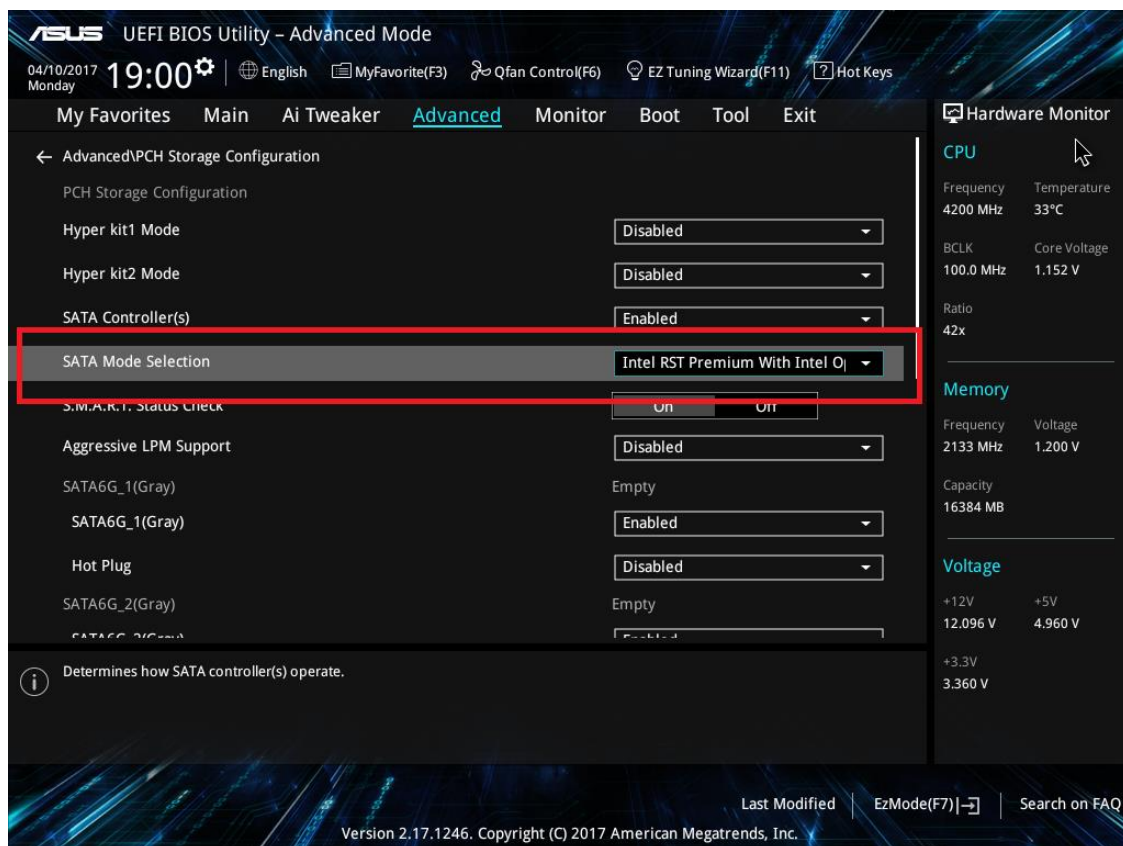
Enter the OS again, and click the OptaneMemory application to launch Intel® OptaneMemory, you may also click the OptaneMemory tray icon located on the bottom right corner of the desktop.

Reconfirm that the OptaneMemory device is recognized in the device manager.



❌ Installing OptaneMemory on RAID mode OS

RAID mode will be defaulted if your OS was installed in RAID mode. You may then set the **CSM** to disabled and set the **Boot from Storage Devices** option to **UEFI driver first**.



ASUS UEFI BIOS Utility – Advanced Mode

04/10/2017 Monday 19:01 English MyFavorite(F3) Qfan Control(F6) EZ Tuning Wizard(F11) Hot Keys

My Favorites Main Ai Tweaker Advanced Monitor **Boot** Tool Exit

← Boot\CSM (Compatibility Support Module)

Compatibility Support Module Configuration

Launch CSM Enabled

Boot Device Control UEFI and Legacy OPROM

Boot from Network Devices Legacy only

Boot from Storage Devices **UEFI driver first**

Boot from PCI-E/PCI Expansion Devices

Storage devices will run the selected type first during the system boot. It is recommended to select either Legacy only or UEFI drivers first by the devices specification for a better stability.
[Ignore]: Accelerate the boot up time without running storage devices during POST(power-on self-test).

Hardware Monitor

CPU

Frequency 4200 MHz Temperature 35°C

BCLK 100.0 MHz Core Voltage 1.168 V

Ratio 42x

Memory

Frequency 2133 MHz Voltage 1.200 V

Capacity 16384 MB

Voltage

+12V 12.096 V +5V 4.960 V

+3.3V 3.360 V

Last Modified EzMode(F7) Search on FAQ

Version 2.17.1246. Copyright (C) 2017 American Megatrends, Inc.

ASUS UEFI BIOS Utility – Advanced Mode

04/10/2017 Monday 19:58 English MyFavorite(F3) Qfan Control(F6) EZ Tuning Wizard(F11) Hot Keys

My Favorites Main Ai Tweaker Advanced Monitor **Boot** Tool Exit

← Boot\CSM (Compatibility Support Module)

Compatibility Support Module Configuration

Launch CSM Enabled

Boot Device Control UEFI and Legacy OPROM

Boot from Network Devices Legacy only

Boot from Storage Devices Legacy only

Boot from PCI-E/PCI Expansion Devices Legacy only

Hardware Monitor

CPU

Frequency 4200 MHz Temperature 35°C

BCLK 100.0 MHz Core Voltage 1.152 V

Ratio 42x

Memory

Frequency 2133 MHz Voltage 1.200 V

Capacity 16384 MB

Voltage

+12V 12.096 V +5V 4.960 V

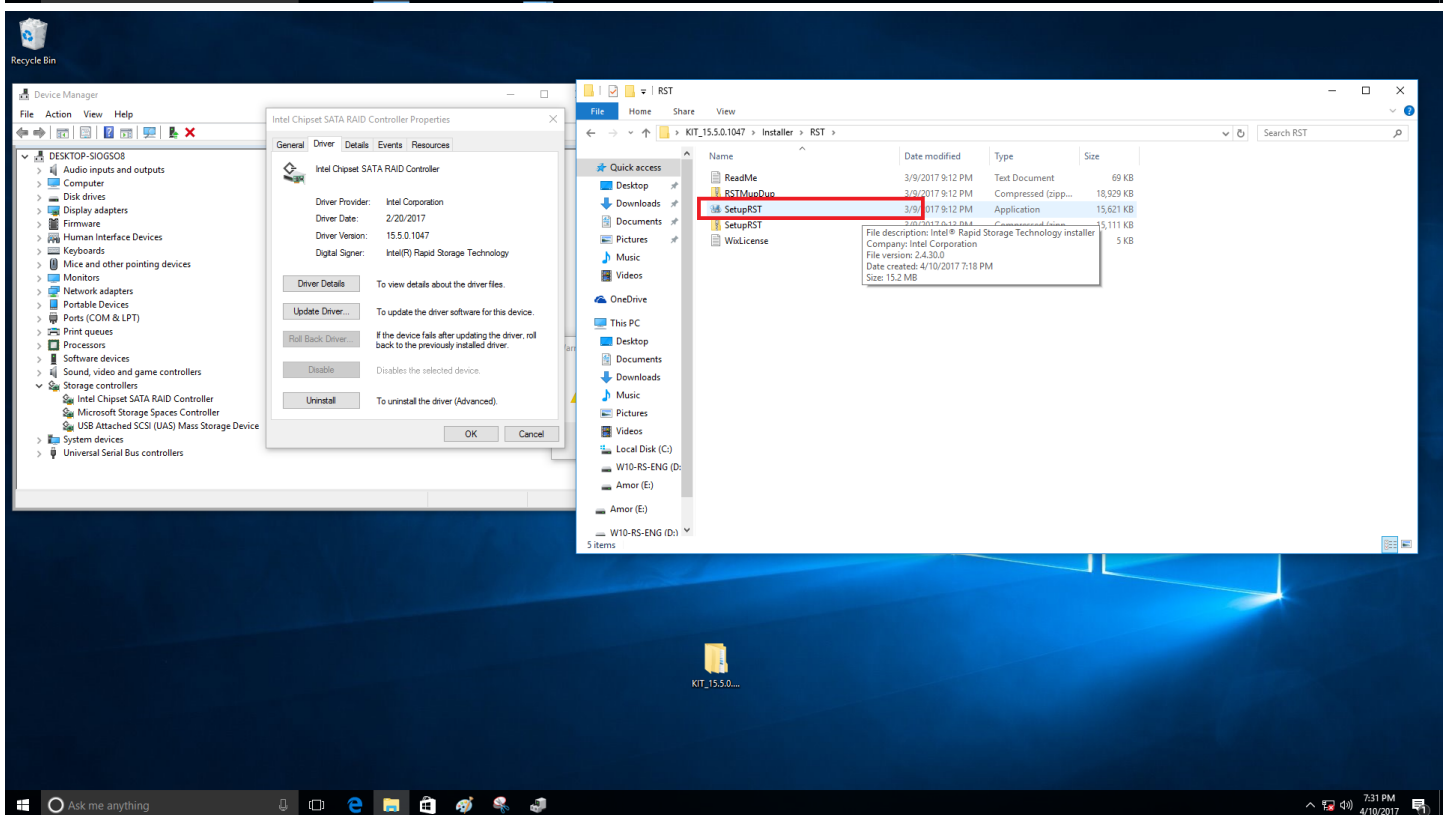
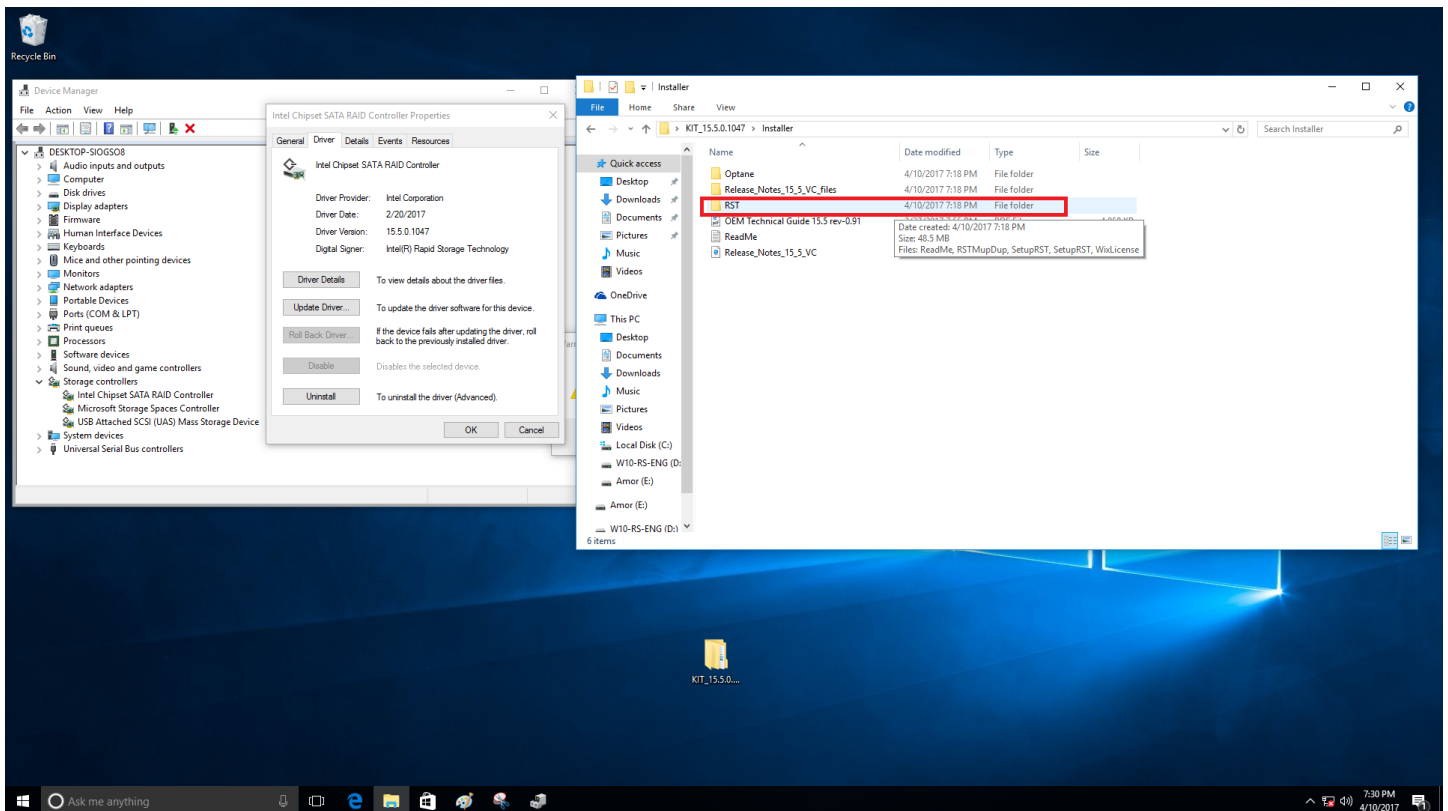
+3.3V 3.360 V

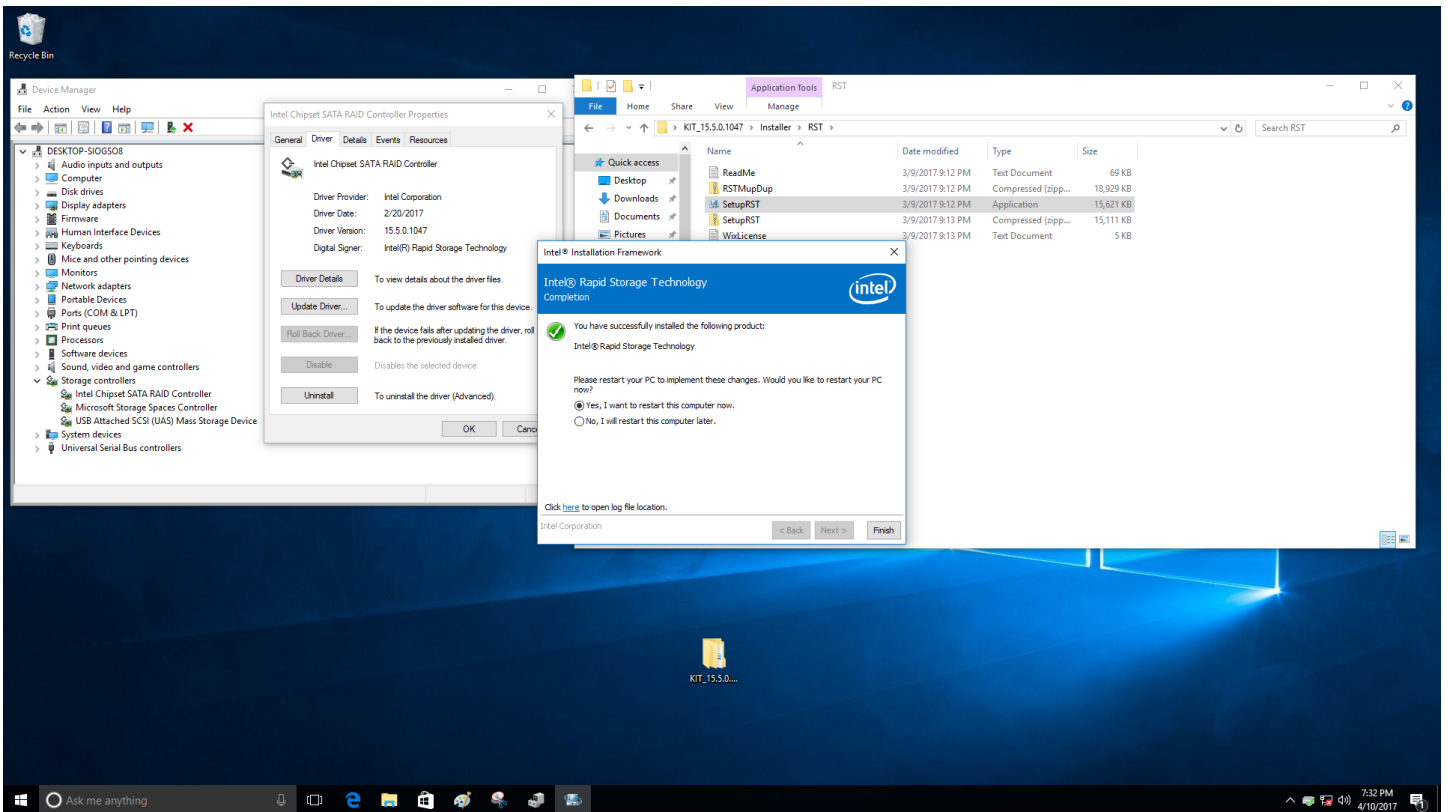
Last Modified EzMode(F7) Search on FAQ

Version 2.17.1246. Copyright (C) 2017 American Megatrends, Inc.

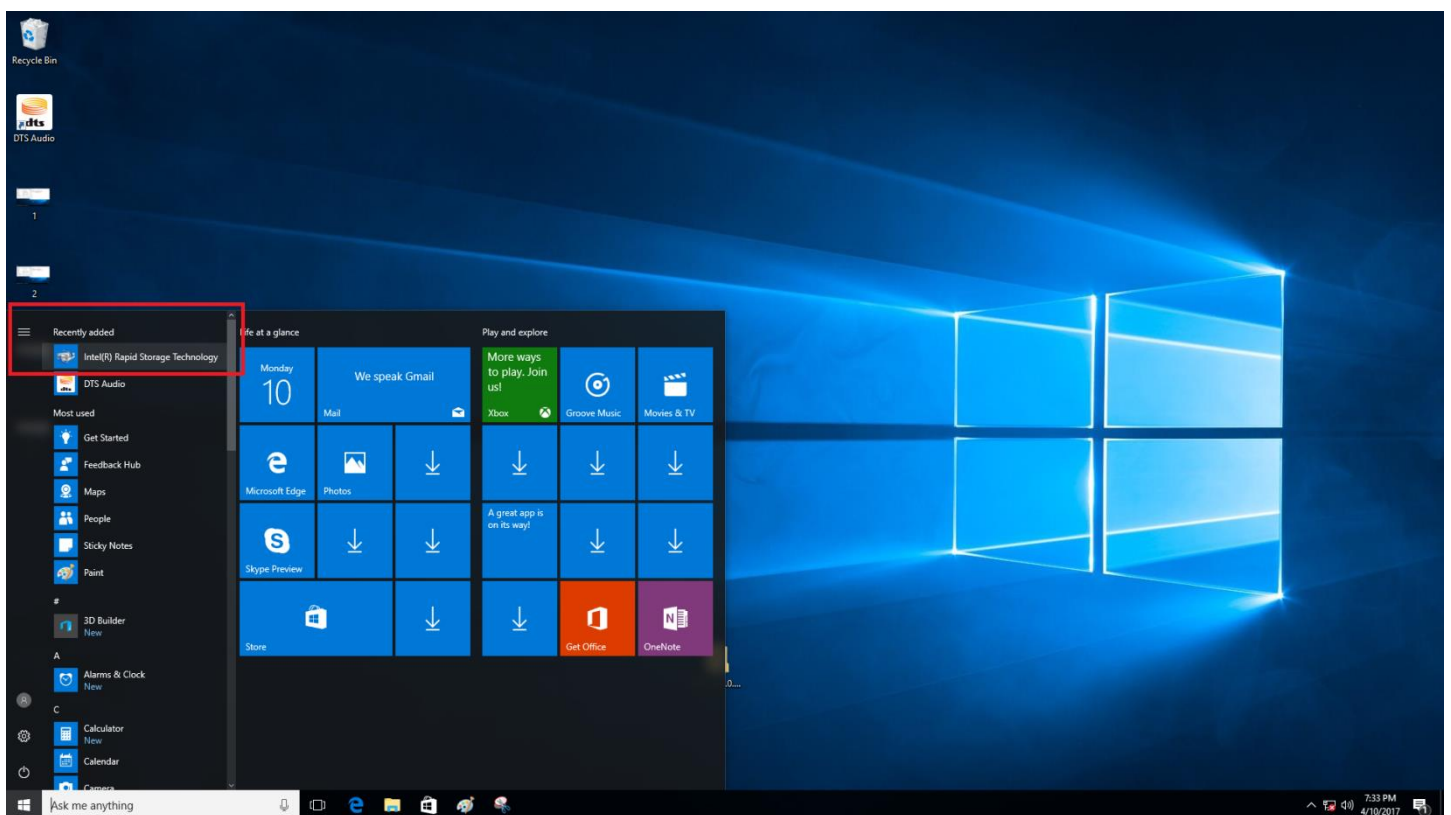
Connect an OptaneMemory device, then enter the OS and select the folder named **RST**, do not select the **Optane** folder, then click on **SetupRST**. Follow the steps shown on the installer and then restart your computer when prompted to.

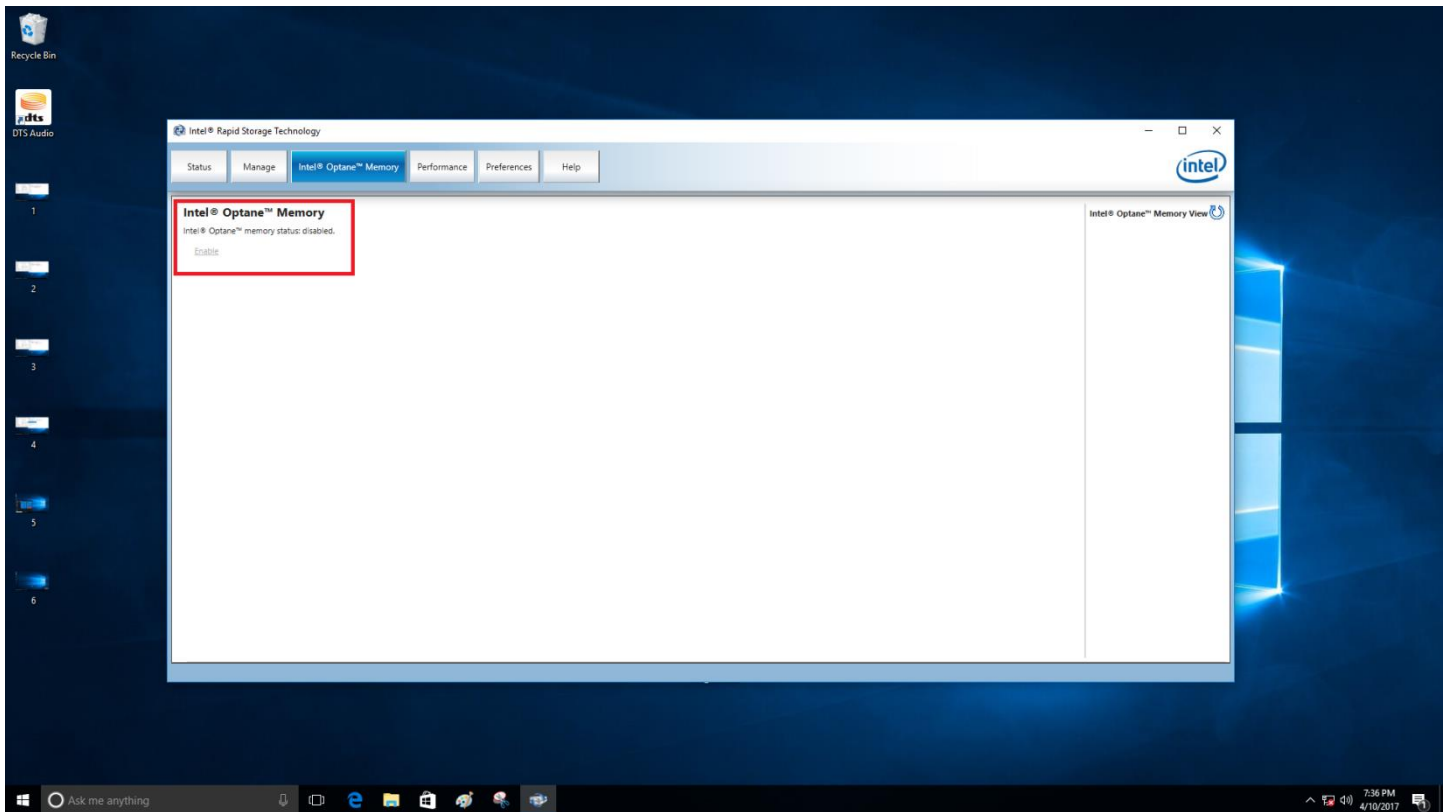
- Choosing to load or not to load the RAID driver during the OS installation will not affect the installation.





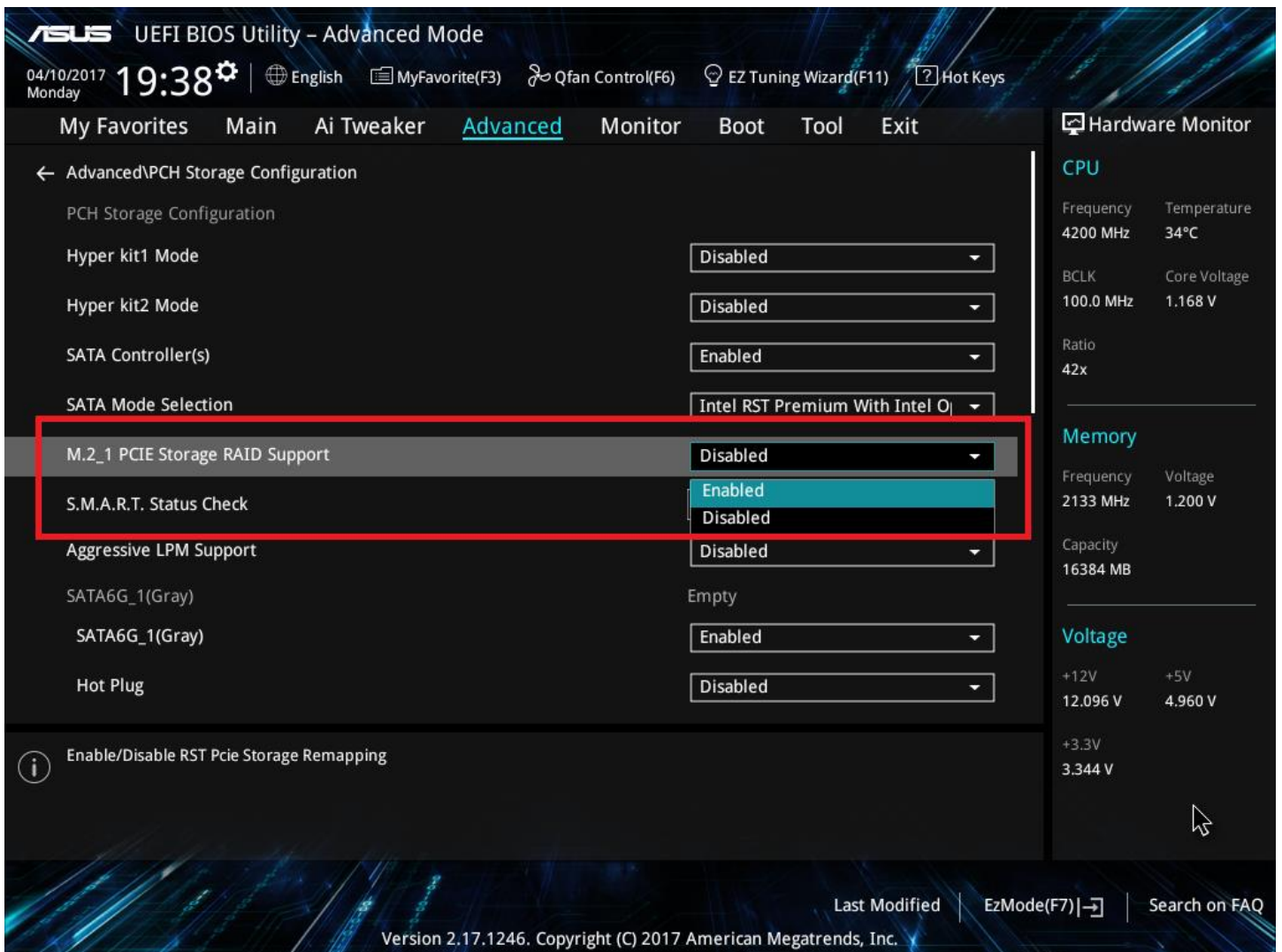
After your computer has restarted, enter the OS and launch the **RST** application, an additional item: **OptaneMemory** should appear. The **Enable** option under the **OptaneMemory** item cannot be selected, this can be activated in the BIOS.





Enter BIOS, and set the **Remapping** item to **Enable**. Now set the **CSM** to **Disable**, and then set the **Boot from Storage Devices** to **UEFI driver first**.

Press F10 to save and exit the BIOS and return to the OS.



ASUS UEFI BIOS Utility - Advanced Mode

04/10/2017 19:01 Monday | English | MyFavorite(F3) | Qfan Control(F6) | EZ Tuning Wizard(F11) | Hot Keys

My Favorites Main Ai Tweaker Advanced Monitor **Boot** Tool Exit

← Boot\CSM (Compatibility Support Module)
Compatibility Support Module Configuration

Launch CSM Enabled

Boot Device Control UEFI and Legacy OPRM

Boot from Network Devices Legacy only

Boot from Storage Devices **UEFI driver first**

Boot from PCI-E/PCI Expansion Devices Ignore
Legacy only
UEFI driver first

Storage devices will run the selected type first during the system boot. It is recommended to select either Legacy only or UEFI drivers first by the devices specification for a better stability.
[Ignore]: Accelerate the boot up time without running storage devices during POST(power-on self-test).

Hardware Monitor

CPU

Frequency 4200 MHz Temperature 35°C

BCLK 100.0 MHz Core Voltage 1.168 V

Ratio 42x

Memory

Frequency 2133 MHz Voltage 1.200 V

Capacity 16384 MB

Voltage

+12V 12.096 V +5V 4.960 V

+3.3V 3.360 V

Last Modified | EzMode(F7) | Search on FAQ

Version 2.17.1246. Copyright (C) 2017 American Megatrends, Inc.

ASUS UEFI BIOS Utility - Advanced Mode

04/10/2017 19:01 Monday | English | MyFavorite(F3) | Qfan Control(F6) | EZ Tuning Wizard(F11) | Hot Keys

My Favorites Main Ai Tweaker Advanced Monitor **Boot** Tool Exit

← Boot\CSM (Compatibility Support Module)
Compatibility Support Module Configuration

Launch CSM Enabled

Boot Device Control Auto
Enabled
Disabled

Boot from Network Devices Legacy only

Boot from Storage Devices Legacy only

Boot from PCI-E/PCI Expansion Devices Legacy only

CSM(compatibility support module)
[Auto]: The system will automatically detect the states of bootable devices and the add-on devices for CSM support.
[Enabled]: For a better compatibility, enable the CSM to fully support the non-UEFI driver add-on devices or the Windows UEFI mode.
[Disabled]: Disable the CSM to fully support the Windows secure update and secure boot.

Hardware Monitor

CPU

Frequency 4200 MHz Temperature 35°C

BCLK 100.0 MHz Core Voltage 1.168 V

Ratio 42x

Memory

Frequency 2133 MHz Voltage 1.200 V

Capacity 16384 MB

Voltage

+12V 12.096 V +5V 4.960 V

+3.3V 3.360 V

Last Modified | EzMode(F7) | Search on FAQ

Version 2.17.1246. Copyright (C) 2017 American Megatrends, Inc.

Enter the OS, launch the RST application and confirm the item **Enable** has been activated, then click it. You will be prompted with a popup message, click **Yes** to enable OptaneMemory, then restart your computer. Enter the OS again and confirm that Intel® OptaneMemory has been successfully launched and that it is recognized in the device manager.

